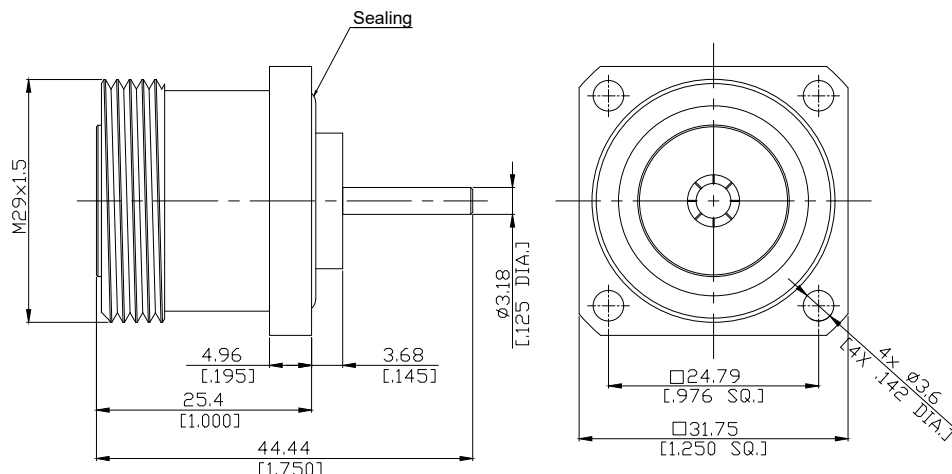


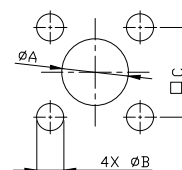


7/16 Jack (Female) Connector Solder Attachment 4 Hole Flange Mount
Stub Terminal, 24.79 (.976 inch) Hole Spacing DC-7.5GHz VSWR1.2

716-2GFA50-4444A / 94



Mounting Dimensions



	mm		inch	
	Max.	Min.	Max.	Min.
A	18	17	0.709	0.670
B	3.8	3.7	0.150	0.146
C	24.89	24.84	0.980	0.978

All dimensions are in mm [inch]

Tolerances according to DIN ISO 2768-mH

Interface

according to

IEC 61169-4

Electrical Data

Impedance

50 Ω

Frequency

DC to 7.5 GHz

Mechanical Data

Coupling mechanisms

Screw-lock

Durability

500 cycles min.

Centre Contact

Soldered

Terminal Type

Stub

Captivated Type

Mechanical

Environmental Data

Temperature Range

-40°C to +150°C

RoHS

compliant

Material And Plating

Piece Parts	Material	Plating
Centre contact	Beryllium Cooper	Gold plating, 3 pinch (Non-magnetic nickel-phosphorus underplating, 80 pinch)
Body	Brass	Copper-Tin-Zinc Alloy
Insulator	PTFE	

Packing

Single or 100